

Installation with Univair Stamped Ribs

Follow the installation instructions on front side, with the following exceptions-

- 1- Move number 4 rib to the number 5 rib location. On Right wing the vertical attachments must be trimmed to provide clearance for brace wire clevises. See Supplement 1, pages 1&2.
- 2- Install additional rib attachment screw as per Supplement 1, page 3. Drill #40 and use std rib attachment screw.
- 3- Install additional tank bay rib at number 4 rib location.
- 4- If necessary, Lengthen "relief area" to provide adequate clearance at fuel guage fittings as per Supplement 1, page 3. For "Wing Root" fuel gauge location only.
- 5- Upon completion check for adequate tank clearances, and adjust as necessary. Tighten tank straps as per Fig.5.

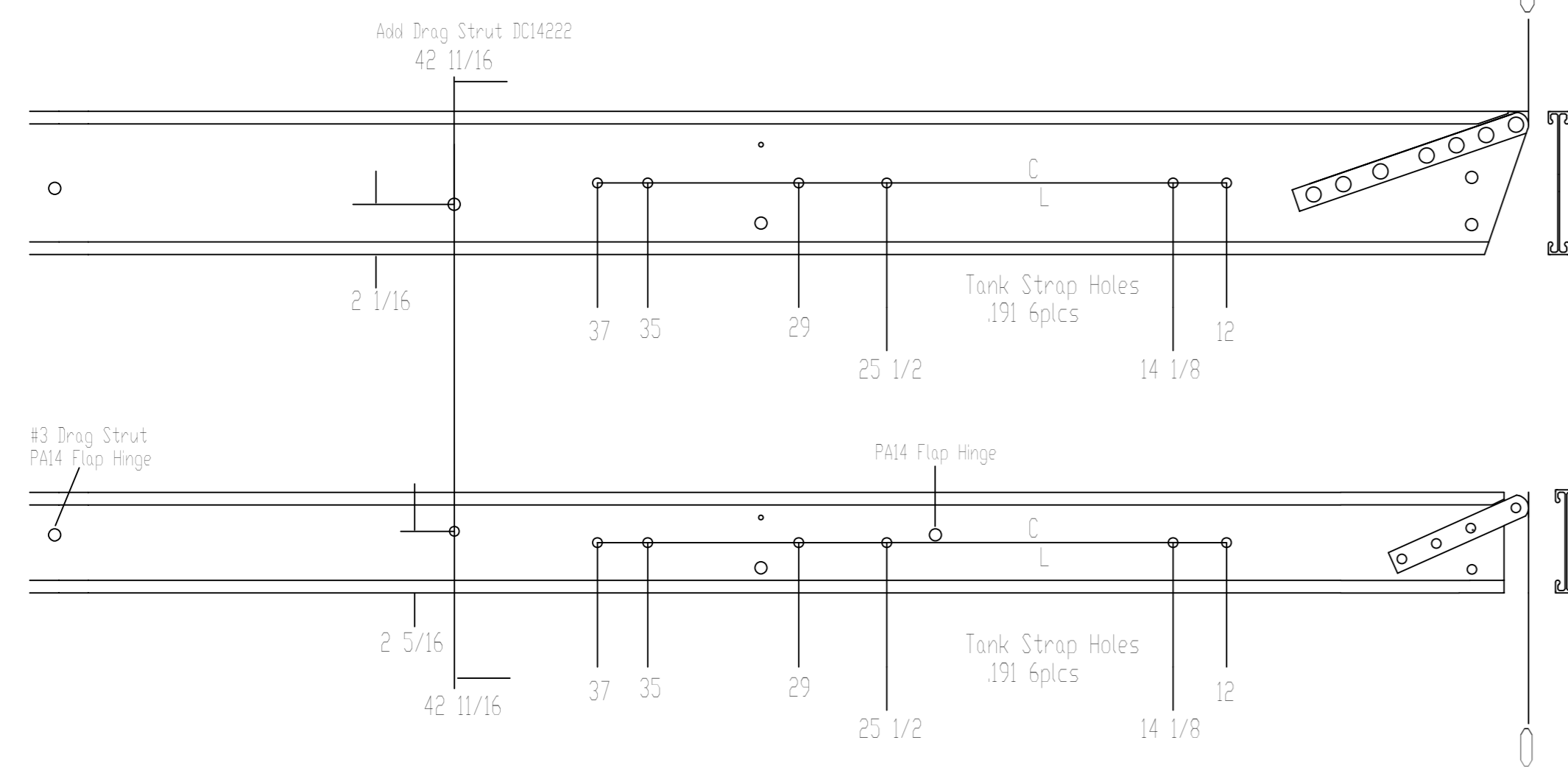


Fig.6

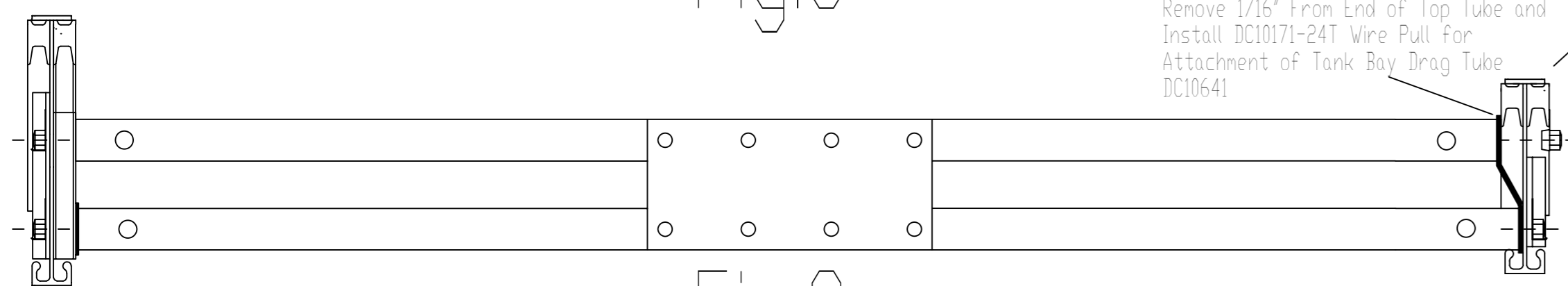
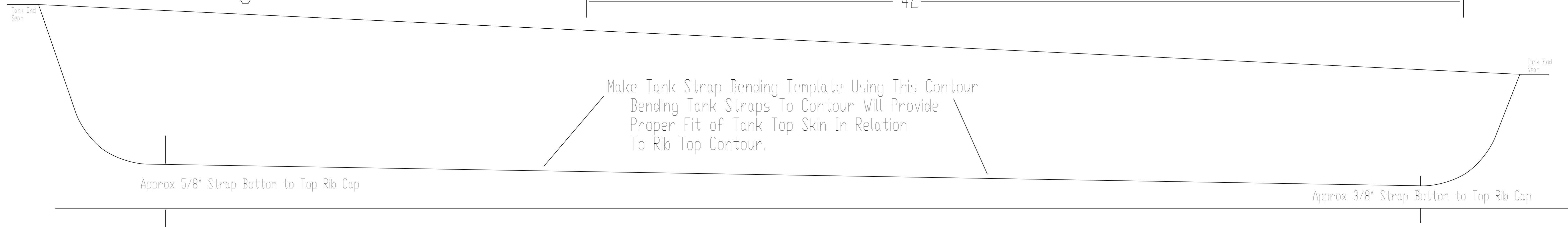


Fig.8



Drill On Assembly To Match Mating Part!!!

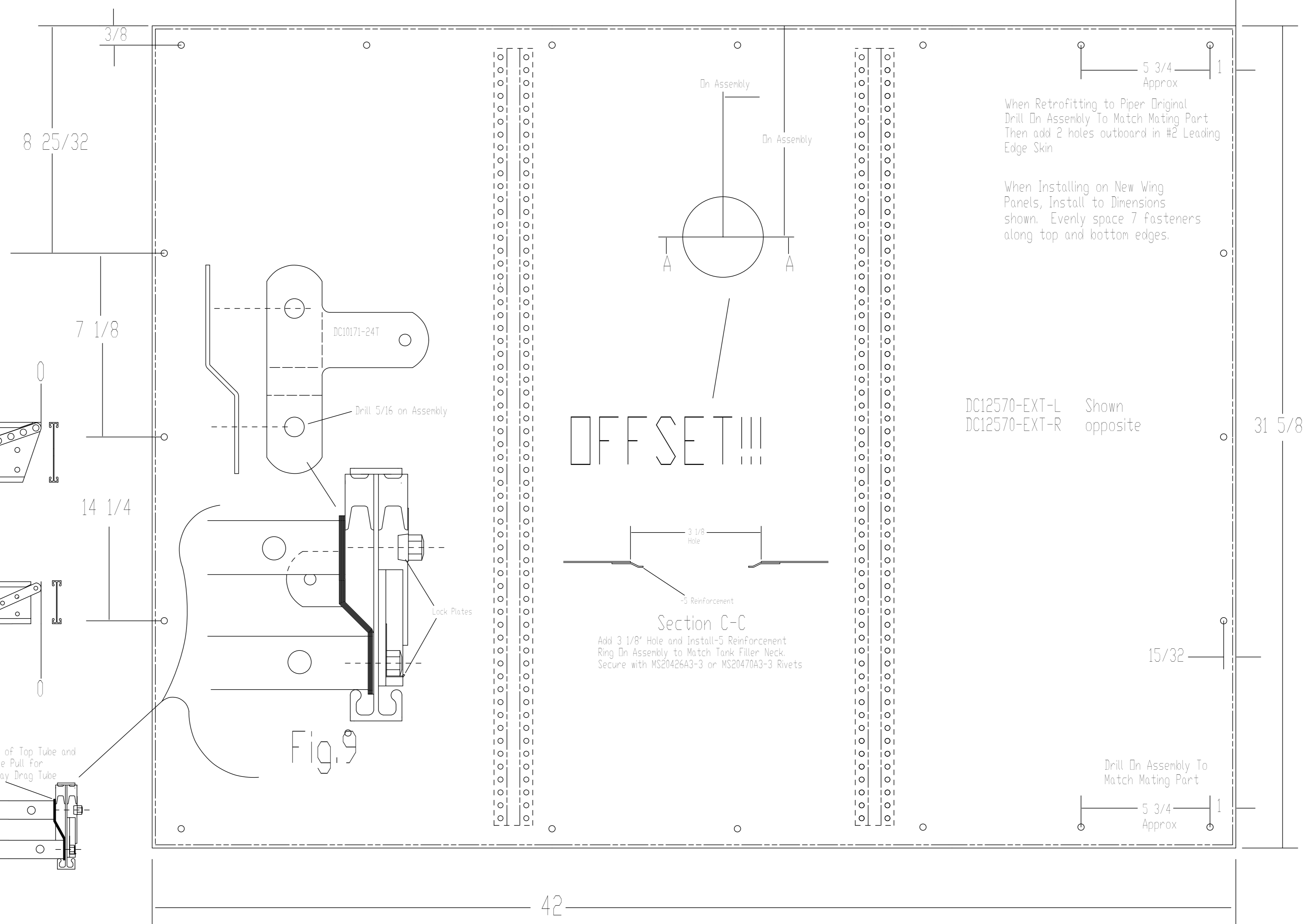


Fig.9

When Retrofitting to Piper Original Drill On Assembly To Match Mating Part Then add 2 holes outboard in #2 Leading Edge Skin

When Installing on New Wing Panels, Install to Dimensions shown. Evenly space 7 fasteners along top and bottom edges.

DC12570-EXT-L Shown opposite
DC12570-EXT-R

OFFSET!!!

Section C-C
Add 3 1/8" Hole and Install-5 Reinforcement Ring On Assembly to Match Tank Filler Neck. Secure with MS20426A3-3 or MS20470A3-3 Rivets